

# HAND HYGIENE SOLUTIONS FOR CORRECTIONAL FACILITIES



## LTX™ Behavioral Health Dispensing System

Designed to provide access to infection control hand hygiene solutions where inmate and staff safety is critical.

## MADE FOR ENVIRONMENTS WHERE SECURITY AND DURABILITY ARE CRITICAL

1. Heavy-gauge 304 stainless steel construction is incredibly durable and reduces the threat of weaponization.
2. Sloped top surface and rounded corners help eliminate anchor points and sharp edges.
3. Robust, barrel-style lock and sliding lock plate prevent ingress.
4. Protective internal shroud at the output location reduces the potential for ingress and contraband storage.
5. Time-delayed output control helps prevent intentional misuse of product.
6. Patented internal anti-ligature mechanisms reduce the potential for self-harm from small diameter objects.



# HAND HYGIENE & SKIN CARE SOLUTIONS WHEREVER YOU NEED THEM



By combining the proven germ-fighting power of PURELL® brand and GOJO® brand products with our innovative delivery solutions, you can create a custom hand hygiene program for your facility.

## PURELL Advanced Instant Hand Sanitizer

- Kills more than 99.99% of most common germs that may cause illness
- Outperforms other hand sanitizers ounce-for-ounce<sup>8</sup>
- Clinically-proven to help maintain skin health<sup>9</sup>
- Available in Green Certified formulations, as well as alcohol and non-alcohol formulations
- Dispensing options include wall-mount dispensers, and personal carry bottles

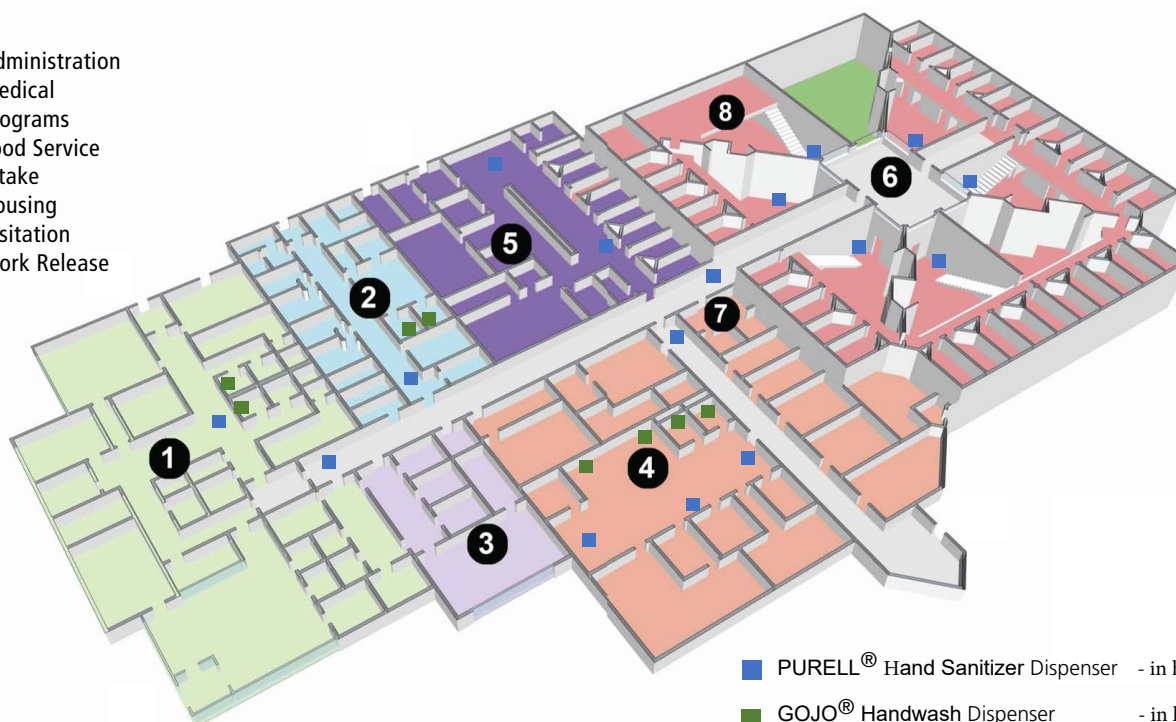


## GOJO Foam Handwash

- Antibacterial and bland formulations available
- Spa-inspired foam formulations enriched with moisturizers, natural extracts and skin conditioners
- Fragrance- and dye-free options available
- Available in green certified formulations
- Meets the Healthcare Personnel Handwash protocol

## RECOMMENDED PRODUCT PLACEMENT

1. Administration
2. Medical
3. Programs
4. Food Service
5. Intake
6. Housing
7. Visitation
8. Work Release



- PURELL® Hand Sanitizer Dispenser - in hallways, dayrooms
- GOJO® Handwash Dispenser - in kitchen, every bathroom

# LTX™ Behavioral Health Dispensing System

## DURABLE, TOUCH FREE DISPENSERS DESIGNED TO ENHANCE HEALTH & SAFETY

- Specialized solutions allow facilities to place infection control products where needed
- Anti-ligature design reduces potential self-harm, vandalism and tampering
- Available with time-delayed output control to help prevent intentional misuse
- Available for use with both alcohol-based and non-alcohol PURELL® Hand Sanitizer formulations, as well as GOJO® soap formulations
- Key locked access for to open and refill
- Powered by four D size batteries (no wiring)



### PRODUCT DETAILS

#### DISPENSERS

	Output Type	Case Pk.	Size	Product No.	Use with Refill
<b>PURELL Sanitizer Dispensing System –</b> Brushed stainless steel, touch free	Standard	1	1200 ml	DS-PRL-1	RF-PRL-AFR, RF-PRL-ADV
	2 min Delay	1	1200 ml	DS-PRL-1D	RF-PRL-AFR, RF-PRL-ADV
<b>GOJO Foam Soap Dispensing System –</b> Brushed stainless steel, touch free	Standard	1	1200 ml	DS-GJ-1	RF-GJ-MLD, RF-GJ-AMC
	2 min Delay	1	1200 ml	DS-GJ-1D	RF-GJ-MLD, RF-GJ-AMC

#### REFILLS

	Case Pk.	Size	Product No.	Use with Dispenser
<b>PURELL Hand Sanitizer Foam - Alcohol Free</b>	2	1200 ml	RF-PRL-AF	DS-PRL-1, DS-PRL-1D
<b>PURELL Advanced Hand Sanitizer Foam</b>	2	1200 ml	RF-PRL-ADV	DS-PRL-1, DS-PRL-1D
<b>GOJO Clear &amp; Mild Foam Handwash</b>	2	1200 ml	RF-GJ-MLD	DS-GJ-1, DS-GJ-1D
<b>GOJO Antimicrobial Foam Handwash with PCMX</b>	2	1200 ml	RF-GJ-AM	DS-GJ-1, DS-GJ-1D



PRODUCT CERTIFIED FOR REDUCED ENVIRONMENTAL IMPACT. VIEW SPECIFIC ATTRIBUTES EVALUATED: UL COWMEL  
UL 2783  
UL 2784



PRODUCTS HAVE BEEN DESIGNATED AS USDA CERTIFIED BIOBASED PRODUCTS.



The Global Leader in Hand Hygiene & Healthy Skin

Call 800.848.8160 or e-mail [jzsales@joneszylon.com](mailto:jzsales@joneszylon.com)

